

Go on a **POWER TRIP** with **FURUNO**

**NAVnet**  
**TZ3**  
touch



Go on a  
**POWER TRIP**  
with the most powerful  
MFD series available.



#### TZT16F - 16" ALL GLASS IPS DISPLAY

This lightning-fast 16" Multi Function Display features a sleek edge-to-edge glass display that delivers ultra-clear images from any angle. This MFD will not only make your helm functional but will also add style and ergonomics.

#### TZT19F - 19" ALL GLASS IPS DISPLAY

Experience navigation like never before with this stunning and powerful 19" Multi Function Display. Imagine having one or multiple units on your helm, giving you a conning station that makes it look like you're the captain of a sci-fi spaceship!

#### TZT9F/TZT12F - 9" & 12" HYBRID CONTROL IPS DISPLAY

Hybrid controls enhance these 9" & 12" Multi Function Displays, making them easy and intuitive to use under any sea conditions. Rest your hand on the RotoKey™ as you crash through the waves, and navigate easily to your charted destination.

# It has all **THE POWER** you've wanted...and more.

- Powerful quad-core processor for lightning-fast response
- Built-in Dual Channel 1kW TruEcho CHIRP™ (TZT12F/16F/19F only) & CW Fish Finder
- High-power 2/3/5kW\* TruEcho CHIRP™ "Deep Impact" Fish Finder Amp (TZT12F/16F/19F only)
- Power-packed 100W & 200W NXT Solid-State Doppler Radars (DRS12A/DRS25A-NXT only)
- 24" and NEW 19" Solid-State Doppler Radome Antenna options (DRS4D-NXT and DRS2D-NXT)
- Deep water Multi-Beam Sonar for up to 300m depth & 200m side scan, NEW Personal Bathymetric Generator (PBG)
- NEW game-changing Fish-It & Drift-It feature designed to save time, fuel, and increase fish catch
- "NavNet Command Center" allows control of up to five 3rd party devices using a built-in HTML browser
- Large 19" and 16" multi touch IPS display for maximum brightness
- Hybrid Control 12" and 9" display with RotoKey™ and buttons for added accessibility
- Pin Code Lock - require an optional password to access your TZtouch3 upon startup
- NEW Video Converter Kits stream compatible Sonar and Radar video data directly to TZtouch3 MFD

\*Requires optional DI-FFAMP. Connect a 5kW or 10kW transducer when using the BT-5, power output is 3kW; not compatible with TZT9F



## PIN CODE LOCK

The PIN CODE Lock feature allows you to optionally require a four-digit password to be entered upon startup, keeping your data safe against theft.



## THE BENCHMARK FOR RADAR

Furuno NXT Solid-State Doppler Radars pack power like never before. From the DRS2D-NXT/DRS4D-NXT dome to the 200 Watt DRS25A-NXT open array, you will get dynamic features like Target Analyzer™, Fast Target Tracking, Bird Mode, and Rain Mode.

(Some features may require additional sensors)



## HIGH-POWER TruEcho CHIRP™ FISH FINDER AMP

Introducing Deep Impact - DI-FFAMP, a high-power TruEcho CHIRP™ Fish Finder amp designed specifically to work with NavNet TZtouch3. This 2kW or 3kW TruEcho CHIRP™ Fish Finder amp gets you down to the deepest waters to find your catch. You can even connect a 5kW or 10kW transducer!

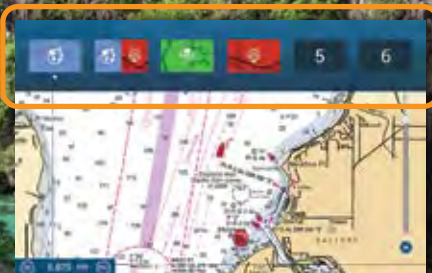
(BT-5 required for 5kW/10kW transducers; DI-FFAMP not compatible with TZT9F)



## DEEP WATER MULTI-BEAM SONAR

Real-time 120° port-starboard up to 200m (over 650 ft.) depth and viewing of the water column and seabed directly under the boat 300m (nearly 1,000 ft.). The DFF-3D allows you to explore fishing spots and find fish in deep water faster than conventional single beam Fish Finders, plus make your own shaded relief charts with the new PBG (Personal Bathymetric Generator) feature.

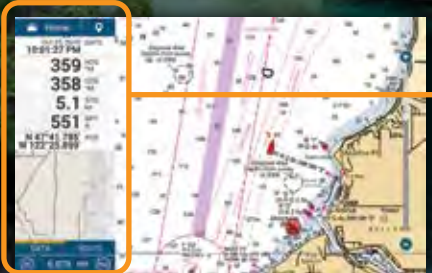
Because finding your  
**HAPPY PLACE**  
shouldn't be difficult.



Top Edge Swipe - Quick Page



Right Edge Swipe - Shortcut



Left Edge Swipe - NavData



Bottom Edge Swipe - Layers



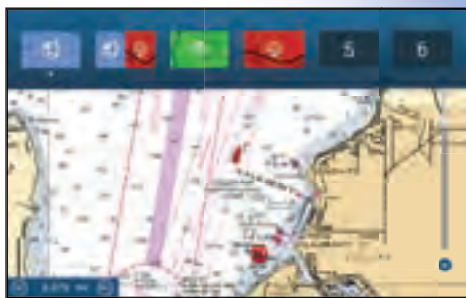
# That's why we made it as **EASY TO USE** as your phone!

We listened to you and worked tirelessly to make TZtouch3 the easiest MFD on the market to use...bar none. With edge-swipe features and single tap menu options, you're never more than a tap or swipe away from what you want to see or do. It's that simple.



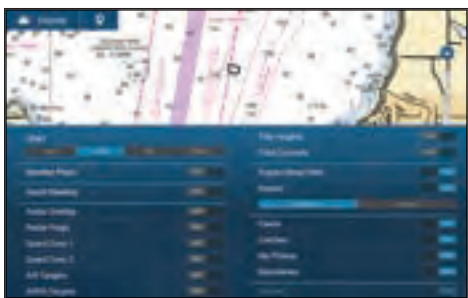
## LEFT EDGE SWIPE - NAVDATA

Swipe from the left to bring up your NavData box. Access general Nav Data from the Data tab or App-specific data when on individual pages.



## TOP EDGE SWIPE - QUICK PAGE

Swipe down from the top to select your Quick Pages. Think of these as similar to your car stereo presets. Easily set your favorites with a long press.



## BOTTOM EDGE SWIPE - LAYERS

Swipe up from the bottom to view App Layers. Toggle commonly used items & layer them on your screen.



## RIGHT EDGE SWIPE - SHORTCUT

Swipe from the right of the screen to bring up the menu of often-used functions, such as Tracks, Position Entry, Tides, ARPA, Fuel, CZone, and more.

## 12" and NEW 9" HYBRID CONTROL DISPLAY

Captains who have smaller boats know that when you are in rough sea conditions, it can be difficult to get an accurate tap on the screen. That's why we made our TZtouch3 12" and NEW 9" MFD with Hybrid Controls. You get the best of both worlds with a full multi touch display and a handy, built-in keyboard that features a RotoKey™, cursor pad and dedicated buttons.

- 1 Short press: Home, Long press: Settings
- 2 Short press: Event, Long press: MOB
- 3 RotoKey™
- 4 Short press: Shift Screen Control, Long press: Full Screen
- 5 Cancel/Center
- 6 Cursor Pad
- 7 Short press: Function 1, Long press: Function 2
- 8 Power/Quick Access Page



When life throws a  
**CURVE**  
here's how you stay on course.



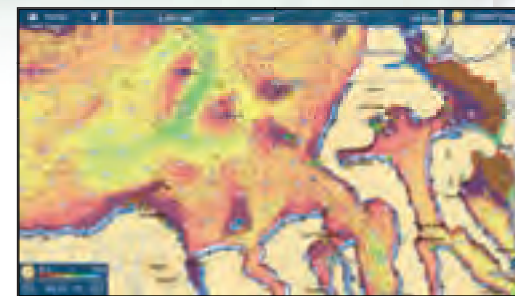
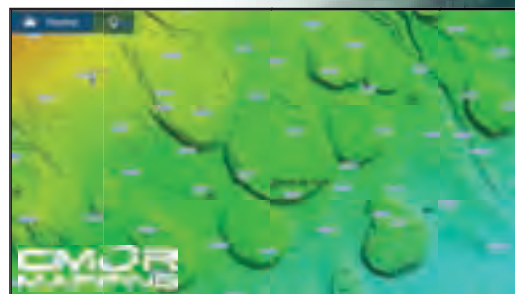
San Juan Islands by Mike Shubic courtesy of San Juan Islands Visitors Bureau

**TimeZero™ Technology Is Faster Than Ever Before**

TZtouch3 incorporates a fast quad-core processor so you can scroll, pan, and zoom in/out completely smooth & seamlessly. Plus, you can navigate in a 3D environment, offering you a realistic perspective and an expanded view of the area around your boat. The 3D chart perspective is perfect for planning and navigating routes.

# Here are all the **FEATURES YOU NEED** to make a good cruise great!

You will find them in every harbor around the world: everyday people who refuse to be constrained by how far they can see. The ones who go all in, because of their love for being on the water. They've inspired us to build a Chart Plotter that is not inhibited by standard features. Rather, we've created a Chart Plotter with speed & performance that allows you to pursue what thrills you...on any course you choose.



## MAPMEDIA VECTOR & RASTER CHART LIBRARY

Freely choose the charts that fit your individual needs. MapMedia brings an extensive library to your TZtouch3 and makes it easy to select raster, vector or fishing charts. C-MAP as well as "Datacore by Navionics" vector cartography are optional charts that can be easily unlocked. MapMedia cartography integrates cutting edge algorithms with high-resolution image processing techniques to deliver a fusion of digital navigation charts and satellite photography.

## SATELLITE PHOTOFUSION™ & CMOR CHARTS (U.S. ONLY)

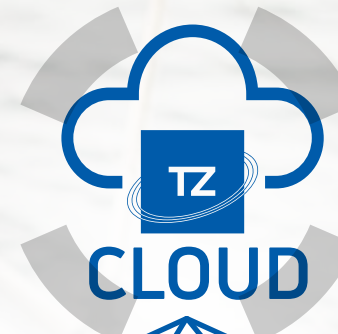
Satellite photography is included in most MapMedia charts and accessed using PhotoFusion™. Land areas (zero depth) are completely opaque, displayed as satellite photos on the chart. As the depth increases, the satellite image is merged with the chart data to provide you with added detail on seabed areas in shallow water, without losing vital chart information. CMOR's high-resolution, shaded-relief bathymetric bottom images help navigators identify suitable locations for fishing and diving (U.S. only).

## VECTOR & RASTER DEPTH SHADING

A depth color scale can be applied to both 2D and 3D vector and raster charts. Transparency levels can be adjusted, so that chart data is visible beneath the color shading. This feature allows you to view water depths at-a-glance with vibrant colors. No more searching for depth numbers, when you can easily set depths to your specified colors.



Welcome to your  
**GO ANYWHERE**  
command center.



TZ PC Software



Cloud.MyTimezero.com



TZ iBoat iOS App



TZtouch3

**NEVER LOSE WAYPOINTS, ROUTES OR SETTINGS AGAIN WITH TZ CLOUD**

Create your routes at home using TZ Navigator, a web browser\*, or TZ iBoat iOS App. Then you can retrieve them from the cloud & download to your TZtouch3. Also, create events on your MFD and retrieve them at home because the data is synchronized automatically & securely to My TimeZero. TZ Cloud also stores marks, routes, boundaries, photos, and catch data!

(\*Cloud.MyTimezero.com raster planning charts for US only)



# An intelligent **CONNECTION** between boat and captain.

When you're out on the water, you want to be on top of your game. So, you train like the pros. You prep all of your equipment. And before you head out, you do your homework. The good news, TZtouch3 just made it all easier with TZ Cloud and the new TZ First Mate App.



## NavNet VIEWER APP

Conveniently view instruments as well as the Fish Finder on your smart devices over the Wireless LAN network. Essential nav data such as Depth, Temp, Wind, COG as well as Engine info are accessible from the palm of your hand.



## NavNet REMOTE APP

Take full control of your TZtouch3 in a whole new way. The NavNet Remote app allows you to operate and view your system with your smart devices remotely.

## NavNet CONTROLLER APP

Also available is the NavNet Controller App, which allows you to control your TZtouch3 with a scroll pad, cursor pad, and dedicated keys.



## TZ FIRST MATE APP KEEPS TRACK OF YOUR CATCH & LOCATION



You put in blood, sweat, and tears finding the perfect hot spot, and guess what, it paid off! Wouldn't it be nice to make a note of what you caught and how big it was? Now your TZtouch3 display can do that when you drop an event mark. Choose the species, enter length & weight, and even take a picture with your phone. View & edit the marks on your smart devices with the TZ First Mate App, TZ PC Software, or TZ iBoat.

Take your adventure  
**FARTHER**  
knowing you will get home safe.



**GO BOLDLY KNOWING THAT YOUR RADAR WILL GET YOU & YOUR FAMILY HOME SAFELY**

When you're serious about adventure, you will no doubt find yourself navigating at night, moving cautiously in the fog, and probably dodging the occasional squall. The good news is that you will have Furuno's high-power Radar to guide you every step of the way. Both the NXT Solid-State Doppler and the X-Class Radars have you covered for watching storms with Rain Mode, monitoring hazardous targets with Target Analyzer™ (NXT-only), Fast Target Tracking, and even finding birds with Bird Mode.

# More power means **BETTER DETECTION** of all the targets around you!

Are you ready to go on a Radar power trip? Experience high-power Radar and amazing target detection with Furuno's NXT and X-Class Radars. We juiced the power of our NXT Solid-State Doppler Radars to give you outstanding long-distance performance that matches their amazing close range capability.



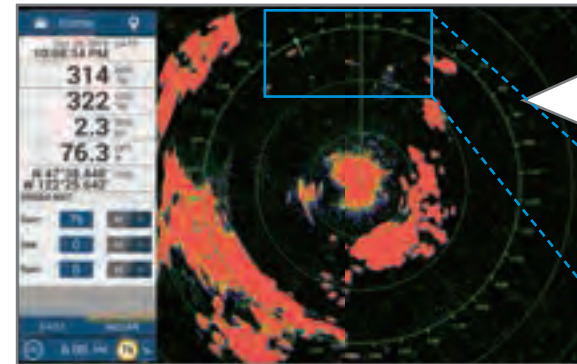
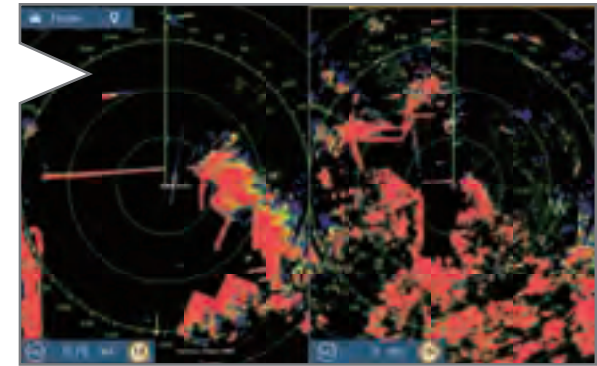
|         | DOME                | OPEN ARRAYS - 3.5', 4', OR 6' |            |            |
|---------|---------------------|-------------------------------|------------|------------|
| NXT     | DRS2D-NXT/DRS4D-NXT | DRS6A-NXT                     | DRS12A-NXT | DRS25A-NXT |
| X-CLASS | DRS4DL+             | DRS6AX                        | DRS12AX    | DRS25AX    |

## DUAL RANGE MODE (Not available with DRS4DL+)

Simultaneous scanning technology produces a dual progressive scan to display & update two Radar pictures, both long & short range.<sup>1</sup> Autonomous control over gain & anti-clutter can be performed on each Radar presentation.<sup>2</sup> This can be used to have one screen with the gain set to locate birds and buoys, while you use the other Radar screen to navigate.

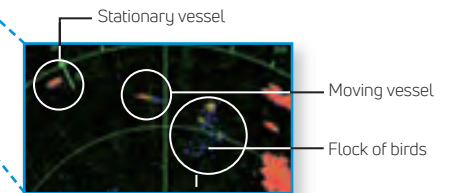
<sup>1</sup> Limited to 12NM on DRS-NXT Series, Combination Screens i.e. Bird Mode + Bird Mode, etc. not available

<sup>2</sup> Auto Sea Mode, Gain, Rain/Sea Clutter not autonomous in Dual-Range Mode on DRS-NXT series



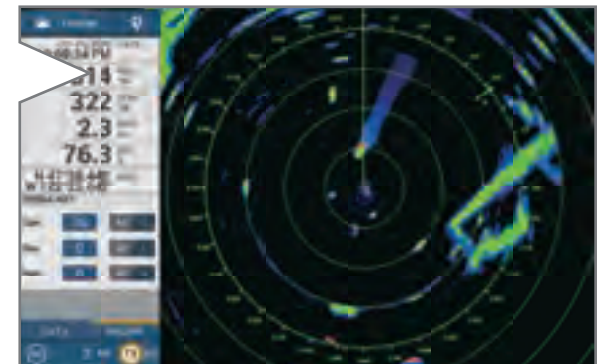
## BIRD MODE

Bird Mode works by automatically adjusting the gain & sea settings for optimal visibility.



## TARGET ANALYZER™

Target Analyzer™ function displays targets that are approaching your vessel & automatically changes color to help you identify potentially dangerous targets. Green echoes are targets that are stationary or are moving away from you, while red echoes are hazardous targets that are moving towards your vessel. Target Analyzer™ improves situational awareness and can increase safety by showing you which targets to watch (Available with NXT Radars only).



## AIS TARGET TRACKING

When connecting an FA-series AIS or FM-4800/4850 to your TZtouch3, AIS targets can be displayed on the Radar screen. The Automatic Identification System (AIS) improves safety during travel by sharing the status & position of your vessel with other AIS-equipped vessels nearby.

# RADAR



Radar Sensor  
 DRS4DL+/DRS2D-NXT/DRS4D-NXT  
 DRS6A/12A/25A-NXT  
 DRS6A/12A/25A X-Class  
 Ethernet

# NavNet TZtouch3 Network/Products Lineup

# FISH FINDER



External Fish Finders can also be connected to TZtouch3. You can select which one to use from the settings menu.



Fish Finder  
 DFF1-UHD/DFF3  
 Ethernet

Bottom Discrimination Fish Finder  
 BBDS1  
 Ethernet

Multi Beam Sonar  
 DFF-3D  
 Ethernet

TruEcho CHIRP™ 2/3kW Amp\*  
 DI-FFAMP

# AIS



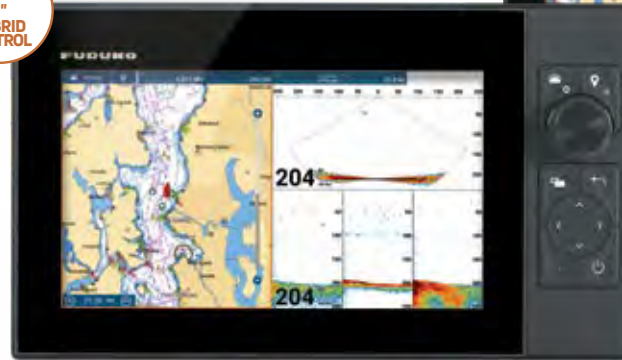
AIS Receiver  
 FA-40  
 NMEA2000 NMEA0183



Class-B AIS Transponder  
 FA-70  
 NMEA2000 NMEA0183



Class-A AIS Transponder  
 FA-170  
 NMEA0183 Ethernet



**TZ9F**  
 9" Hybrid Control



**TZ12F**  
 12" Hybrid Control

# WEATHER/ PC PLOTTER



TZ PC Software  
 Ethernet



Network Weather  
 Facsimile Receiver  
 FAX-30



Network Satellite Weather  
 and Radio Receiver  
 BBWX4\*2  
 Ethernet

# OTHERS

NavNet Command Center \*More apps planned  
 3rd Party Compatible Apps (v2.01\*)



Marine Entertainment System  
 Fusion APOLLO Series, etc.  
 Ethernet NMEA2000



IP Camera  
 Ethernet



Analog Camera  
 Video



Thermal Camera  
 Ethernet Video



Digital Switching System  
 CAN bus



Internal GPS Antenna  
 TZT9F/TZT12F/TZT16F

# CONVERTER



NMEA Data Converter  
 IF-NMEA2K2  
 CAN bus NMEA0183



Analog NMEA Data Converter  
 IF-NMEAFI  
 CAN bus Analog



IP Video Stream Encoder (VGA)  
 VI-CSH8L  
 Video Ethernet



IP Video Stream Encoder (HDMI)  
 VI-HDMI  
 Video Ethernet



NavNet TZtouch3 is NMEA2000 certified. NMEA2000 offers improved data transfer rates and true plug-and-play operation.

\*1 Optionally connect a 5kW or 10kW transducer to DI-FFAMP using BT-5; DI-FFAMP not compatible with TZT9F.  
 \*2 SiriusXM weather coverage is currently available only in U.S. and Canada. SiriusXM subscription required.



**TZT16F**  
16" Multi Touch

**TZT19F**  
19" Multi Touch



Internal 1kW TruEcho CHIRP™ Fish Finder\*  
\*Dual Channel for TZT12F/TZT16F/TZT19F only, Single Channel for TZT9F only

### Interface Connection Legend

- Ethernet 100 Base-T Connection
- Can bus or NMEA2000 Connection
- NMEA0183 Connection
- Video Connection
- Analog Connection
- USB Connection

\*3 220WX available only in U.S. and Canada. \*4 Requires IFNMEA-IF Data Converter.



Touch Encoder Unit  
TEU001B (Black)  
TEU001S (Silver)



Remote Control Unit  
MCU-004



Remote Control Unit  
MCU-002



Keyboard  
MCU-005



### OPTION



AutoPilot  
NAVpilot-300



AutoPilot  
NAVpilot-711C



### AUTOPILOT



Integrated Heading Sensor  
PG-700



Satellite Compass  
SCX-20



Satellite Compass  
SC-33



Satellite Compass  
SC-70



### COMPASS



GPS/WAAS  
Receiver Antenna  
GP-330B



GPS Navigator  
GP-33



### GPS

External GPS antennas & navigators  
can also be connected to TZtouch3.  
You can select which one to  
use from the settings menu.



Ultrasonic Weather Station  
220WX\*3



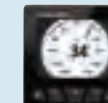
Depth/Speed/Temp Sensor  
DST-810 & other smart sensors for depth/speed/temp



### SENSOR



Wind Transducer - Analog  
FI-5001/L\*4



Instrument  
FI-70



### INSTRUMENT

We gave you something  
**TO CHIRP**  
about!



mc<sup>2</sup>X Quick  
Anti-roll Gyro Stabilizers

FURUNO

## GO DEEPER WITH MORE POWER THAN YOU THOUGHT WAS POSSIBLE

You spoke. We listened. And now we delivered! TZtouch3 incorporates a powerful internal 1kW TruEcho CHIRP™ Fish Finder. For many, this is the perfect Fish Finder, but for some, they need even more. So, we proudly bring you **Deep Impact (DI-FFAMP)**, a high-powered 2kW/3kW amplifier that connects to the internal TruEcho CHIRP™ Fish Finder. But if that's not enough, Deep Impact allows you to connect a 5kW or 10kW transducer with the BT-5. Go big or go home!

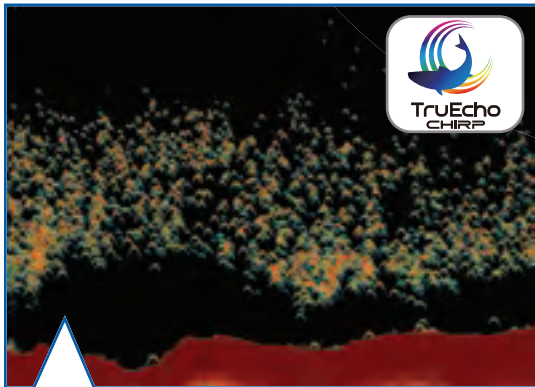


# We're pushing fishing TECHNOLOGY to its limits and it feels good.



Welcome to the future of high-powered, deep dropping, full-featured Fish Finders. We're not talking about your daddy's Fish Finder. We took our commercial fishing know-how and put it into TZtouch3, giving you capabilities that a recreational line of Fish Finders has never seen.

Reach unfathomable depths with Deep Impact!

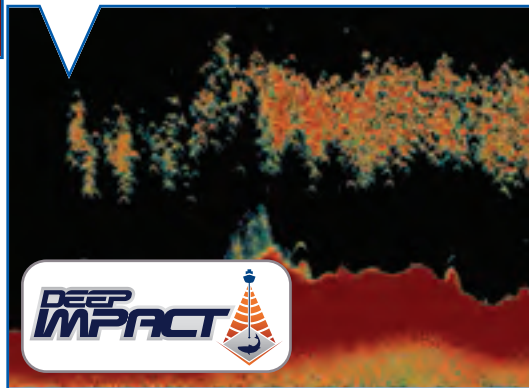


## DEEP IMPACT TruEcho CHIRP™ AMP

High-powered TruEcho CHIRP™ is available for TZtouch3 by interfacing the Deep Impact (DI-FFAMP) to the internal Fish Finder (except TZT9F). Deep Impact boosts your power to a 2/3 kW CHIRP Fish Finder. High-powered TruEcho CHIRP™ ensures that your echoes come back strong & clear at every depth range, displaying fish targets and bottom structure with amazing clarity.

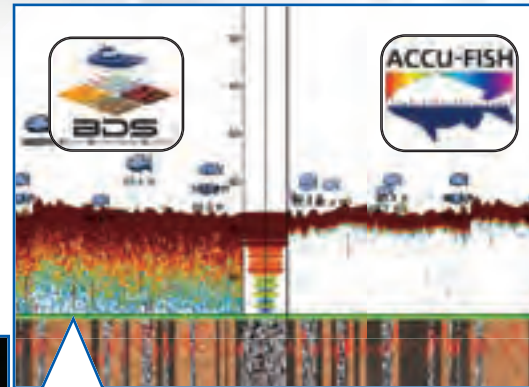
## FIND MORE FISH WITH TruEcho CHIRP™

The internal 1kW TruEcho CHIRP™ Fish Finder inside TZtouch3 is designed to operate across a wide range of frequencies utilizing a broadband transducer and delivers significant advantages to signal clarity & target definition. Due to the constant sweeping of frequencies, it is capable of gathering more & higher quality data than traditional Fish Finders. The TZT9F is a single-channel, while the TZT12F/16F/19F all utilize a dual-channel 1kW TruEcho CHIRP Fish Finder.



## ADDITIONAL FISH FINDER OPTIONS

In addition to the built-in Fish Finder, you can also connect the DFF3, BBDS1, OR DFF-3D via Ethernet.



## BOTTOM DISCRIMINATION DISPLAY & ACCU-FISH™ FISH SIZE ANALYZER\*\*

Bottom Discrimination provides detailed information about the composition of the seabed & organizes it into four different categories: Rocks, Gravel, Sand, and Mud.

The ACCU-FISH™ algorithm analyzes echo returns in order to compute individual fish size. The algorithm is capable of calculating fish size ranging from 10 cm up to 199cm (>4" to <78") long. Fish depth can also be displayed.

\*Feature works with certain transducers. Check to ensure your transducer is compatible.

\*\*In some instances, fish size indicated on the TZtouch3 may differ from its actual size. Please carefully read the operator's manual before utilizing this feature.

## NEW FEATURE: FISH-IT & DRIFT-IT

Tap on a fishing location such as a pinnacle, wreck, artificial reef, point, or any place on the screen to activate. Fish-It stays active until you tap the stop sign on the top display.

Once a Fish-It point has been selected, the Drift-It feature can be activated on the data bar. Once activated, Drift-It automatically calculates your drift starting location to allow a perfect drift over the Fish-It spot.

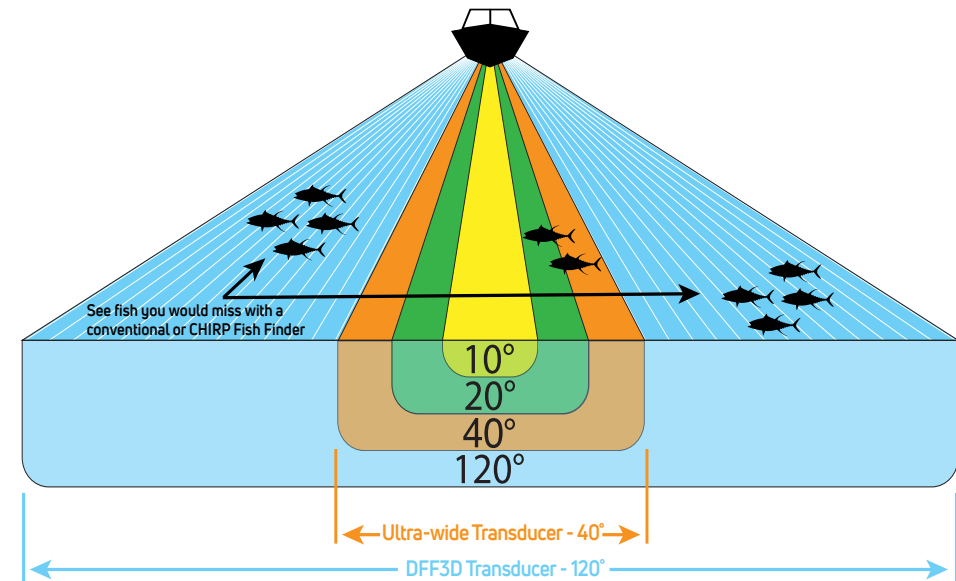


Drift-It will save time and fuel by eliminating the guesswork in determining vessel drift in challenging wind and current conditions.

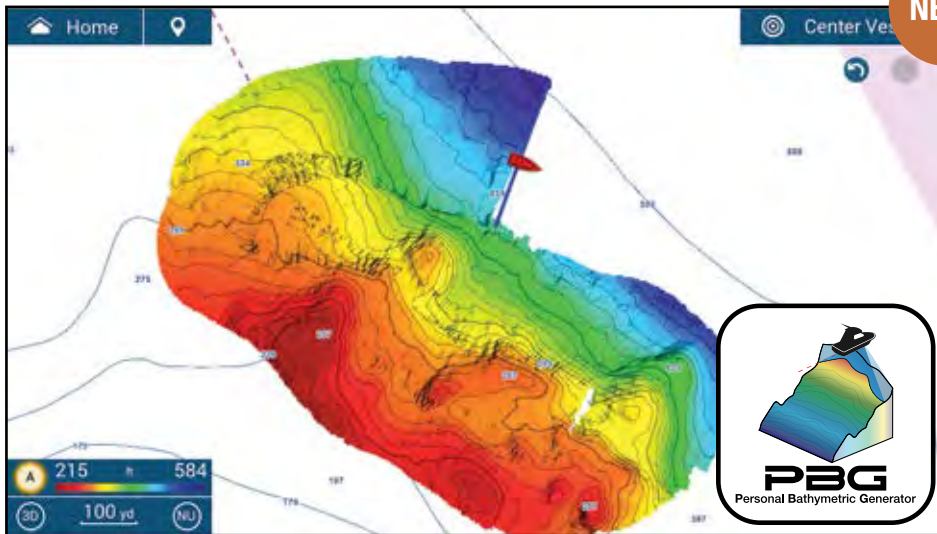
# More power to see 120° PORT-STARBOARD

giving you an edge over the competition.

Normal down-sounding Fish Finders have a beam angle of 40° or less. But with the DFF-3D Multi Beam Sonar, you see 120° port-starboard for 200m (650+ ft). Plus, with the power of the DFF-3D, you can see fish directly below the boat 300m (nearly 1,000ft). When you match this with the Deep Impact TruEcho CHIRP™, you'll have the ultimate fishing machine!

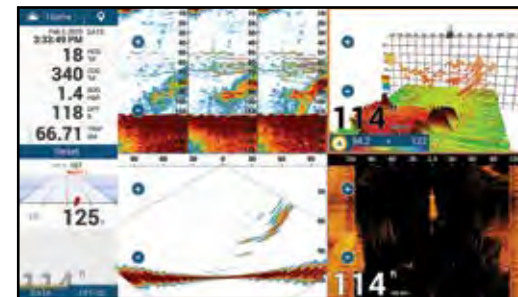


The DFF-3D Multi Beam Sonar operates at 165kHz, giving you fantastic depth penetration while still displaying echoes in high-resolution. Compared to a 40° ultra-wide transducer, you will see 3-times the area around your boat, helping you to find fish you might have otherwise missed. Plus, you can see which side of the boat they are on!



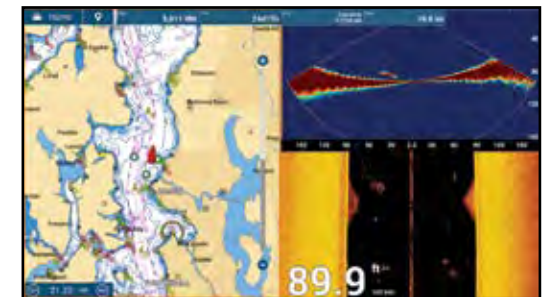
## BATHYMETRIC SHADED RELIEF MAPS

Quickly create your own PBG (Personal Bathymetric Generator) Shaded Relief Maps using TZtouch3 and the DFF-3D. Instead of just one depth per point, the DFF-3D provides 50 points. Discover new fishing hot spots and save them to the cloud, so you can return again and again! Bottom images are drawn with shaded relief, depth contours, and variable colors, making it easy to identify hidden structure and ridges that hold fish in a simple, easy-to-interpret presentation. Multiple color palettes are available, including the ability to show contour lines only. The area each ping covers is approximately twice the depth at the time of recording, so at a depth of 100 meters, a 200 meter-wide area is displayed and recorded to your NavNet TZtouch3 MFD.



## USE DFF-3D WITH YOUR FISH FINDER

This is a powerful combination that helps you get on the fish like never before. Use your standard Fish Finder on low-frequency to go deep (left side of the screen) and then use the DFF-3D for your high-frequency to see fish in the water column. With the 3D History and Triple Beam Modes, you can easily see which side of the boat the fish are located, so you know where to drop your line.



## EASILY SEE WHERE TO DROP LINES

When you find fish, you can quickly drop a mark on your Chart Plotter and activate Fish-It & Drift-It. Then looking at the DFF-3D's Cross Section and Side Scan Modes (right side of the screen), you can easily determine which side of the boat the fish are on, how deep they are, and how far out from the boat they are swimming. It's almost like you have a tracker attached to them!



# Build the ultimate NAVIGATION SUITE customized to your specific needs.

The beauty of NavNet TZtouch3 is its scalability - systems can be as big or small as you need. Add, change or remove AIS, VHF, Compass, Weather and other sensors as needed to dial in your dashboard, whether fishing, cruising or sailing.

## MARINE WEATHER FORECASTING

The TZtouch3 weather tool is completely free & easy to use, giving you unlimited access to weather forecasts worldwide 24 hours a day provided by NavCenter. Select the coverage you want, what type of data you need and for what time period, then you simply download the data.

Also available on TZtouch3 is the BBWX4 SiriusXM Satellite Weather Receiver. Get up-to-date weather info/forecasting, plus play your favorite SiriusXM Satellite Radio channels.

(U.S. & Canada only)



## FA-40 & FA-70 AIS RECEIVER & TRANSPONDER

The FA-40/70 AIS receives the vessel name, call sign, position, COG, SOG, and other useful information from surrounding vessels. The FA-70 is a Class-B+ AIS that transmits your vessel information at higher power & faster rates than typical Class B units for added awareness. SOTDMA guarantees an AIS time slot allocation, making you visible in congested waters.



## FM-4800/4850 VHF/DSC/GPS/AIS/HAILER

The FM-4800/4850 is a marine VHF Radiotelephone with built-in Class D DSC, GPS Receiver\*, AIS Receiver, and Simplified Loud Hailer with intercom. Its built-in AIS Receiver can be used to overlay AIS targets on your TZtouch3 & the GPS receiver can be used for a backup.

\*: GPS Antenna required for FM4850.

## FISH MAPPING BY SIRIUSXM

NEW!

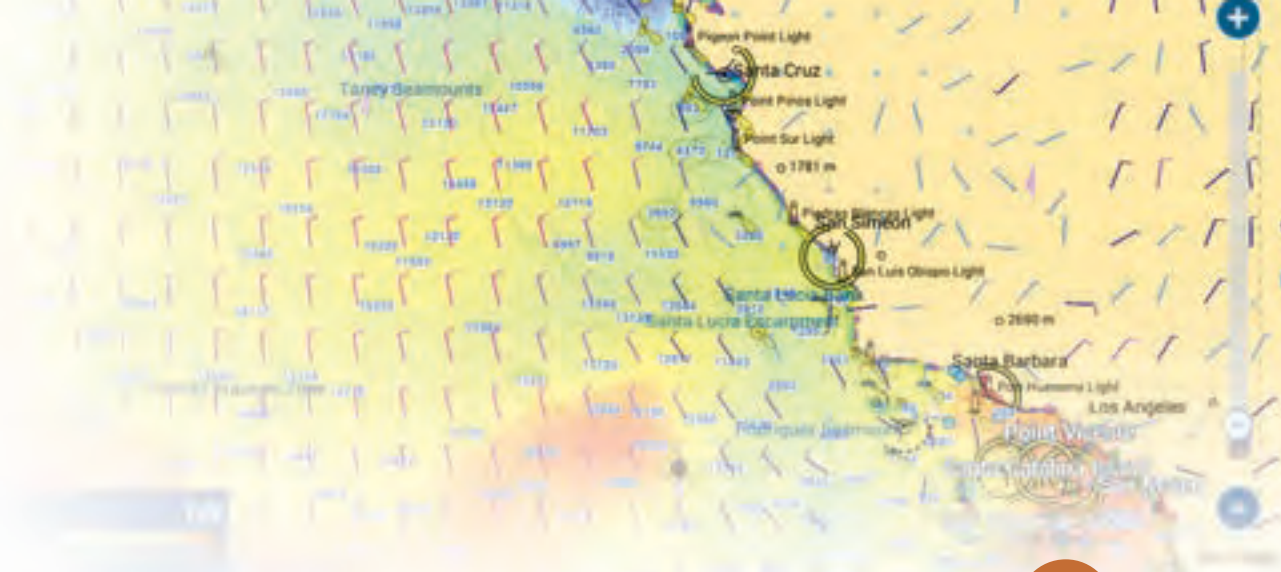
SiriusXM Fish Mapping provides Fishing Recommendation Areas for up to 6 fish species such as Tuna, Billfish, Swordfish, Kingfish, Wahoo, and Mahi. Fish Mapping also provides information such as Water temperature, SST contours, subsurface temperatures up to 30m, temperature contours, weed lines, plankton concentrations and front strength, sea surface anomalies, etc.

(U.S. & Canada only)



## SCX-20 SATELLITE COMPASS

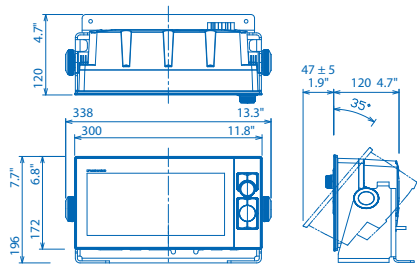
The SCX-20 enhances the performance of onboard TZtouch3 sensors such as Radar, Chart Plotter, Fish Finders, Sonar, and Autopilot. The unprecedented quad antenna design of the SCX-20 makes it capable of calculating extremely accurate heading, pitch, roll, and heave information.



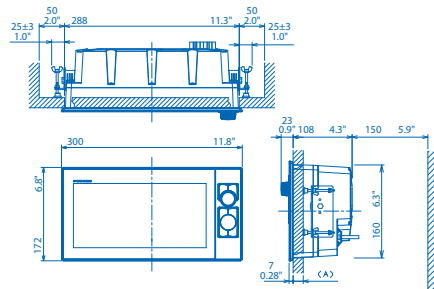
# Specifications - NavNet TZtouch 3

| NavNet TZtouch3 MFDs     |   |                     |                      |                     |
|--------------------------|---|---------------------|----------------------|---------------------|
| MODEL                    | TZT9F   | TZT12F              | TZT16F               | TZT19F              |
| <b>DISPLAY UNIT</b>      |   |                     |                      |                     |
| Type                     | Color TFT multi touch In-Plane Switching (IPS) LCD  |                     |                      |                     |
| Screen Size              | 9" Wide   | 12.1" Wide          | 15.6" Wide           | 18.5" Wide          |
| Screen Resolution        | HD 1280x720   | WXGA 1280 x 800     | FHD 1920 x 1080      | FHD 1920 x 1080     |
| Screen Brightness        | 1000 cd/m2(typical)   | 900 cd/m2 (typical) | 1000 cd/m2 (typical) | 900 cd/m2 (typical) |
| Display Colors           | 16,770,000 colors (Chart Plotter), 64 colors (Radar/Fish Finder)  |                     |                      |                     |
| Language                 | Bulgarian, Chinese, Danish, English (USA/UK), Finnish, French, German, Greek, Italian, Japanese, Norwegian, Portuguese, Russian, Spanish, Swedish |                     |                      |                     |
| <b>GPS/WAAS</b>          |   |                     |                      |                     |
| Receiver Type            | GPS: 72 channels, SBAS: 1 channel (C/A mode, WAAS)  |                     |                      |                     |
| Receiving Frequency      | L1 (1575.42 MHz)  |                     |                      |                     |
| Time to First Fix        | 100 s (cold start)  |                     |                      |                     |
| Accuracy                 | 10 m (GPS), 7 m (MSAS), 3 m (WAAS)  |                     |                      |                     |
| Position Update Interval | 0.1 s (10Hz)  |                     |                      |                     |
| <b>CHART PLOTTER</b>     |   |                     |                      |                     |
| Cartography              | MapMedia mm3d chart (CMOR(U.S. only)/C-MAP/Navionics/NOAA)  |                     |                      |                     |
| Memory Capacity          | 30,000 user points, 30,000 points for ship's tracks, 200 planned routes (500 points per route)  |                     |                      |                     |
| Alarms                   | Anchor Watch, XTE, Depth*, Speed, Sea Surface Temperature*, Trip Distance, Fuel Gauge*, Wind Alarm*, Boundary Alarm (*external data required)     |                     |                      |                     |
| <b>RADAR</b>             |   |                     |                      |                     |
| Display Modes            | Head-up*, North-up *Heading input required.   |                     |                      |                     |
| Echo Trail               | Interval: 15 s, 30 s, 1 min, 3 mins, 6 mins, 15 mins, 30 mins and continuous  |                     |                      |                     |
| Target Tracking          | 30 ARPA Targets (Up to 100 Targets can be tracked with DRS-NXT Series Radar)  |                     |                      |                     |
| Radar Alarms             | Guard Zone, CPA/TCPA, Trigger, Video, Azimuth, Heading Line   |                     |                      |                     |
| <b>FISH FINDER</b>       |   |                     |                      |                     |
| Transmit Frequency       | CW: 50/200kHz CHIRP: 40kHz to 225kHz  |                     |                      |                     |
| Transducer               | 300/600 W or 1 kW* *Matching box MB1100 required for some FURUNO transducers.   |                     |                      |                     |
| Display Range            | 2 to 1,200 m, shift: 0 to 1,200 m   |                     |                      |                     |
| Display Mode             | ACCU-FISH™, A-Scope, Auto (Fishing/Cruising), RezBoost™, Bottom Discrimination, TruEcho CHIRP™ and CW   |                     |                      |                     |
| Picture Advance          | 8 steps: x4, x2, x1, 1/2, 1/4, 1/8, 1/16, stop  |                     |                      |                     |
| Fish Finder Alarms       | School of fish, School of fish for bottom lock  |                     |                      |                     |

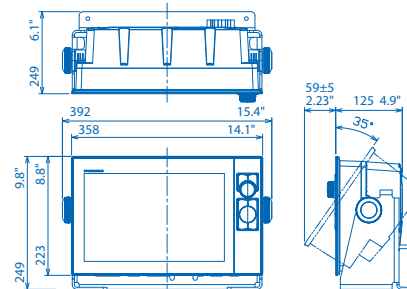
Multi Function Display (Tabletop Mount)  
TZT9F 3.5 kg 7.7 lb



Multi Function Display (Flush Mount)  
TZT9F 3.3 kg 7.3 lb

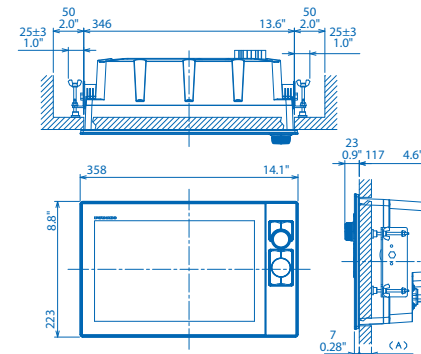


Multi Function Display (Tabletop Mount)\*  
TZT12F 5.6 kg 12.3 lb

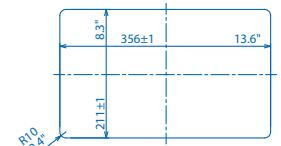


\*Bracket is optional

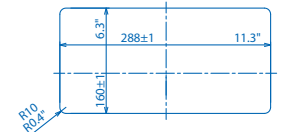
Multi Function Display (Flush Mount)  
TZT12F 5.1 kg 11.2 lb



Multi Function Display Flush Mount  
TZT12F Cutout Dimension



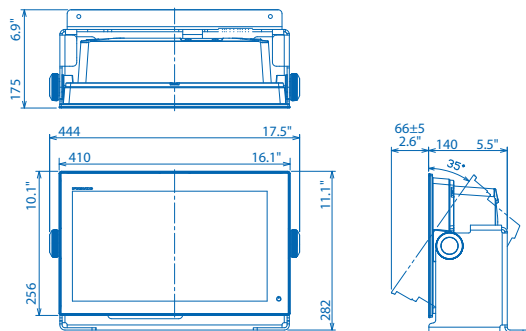
Multi Function Display Flush Mount  
TZT9F Cutout Dimension



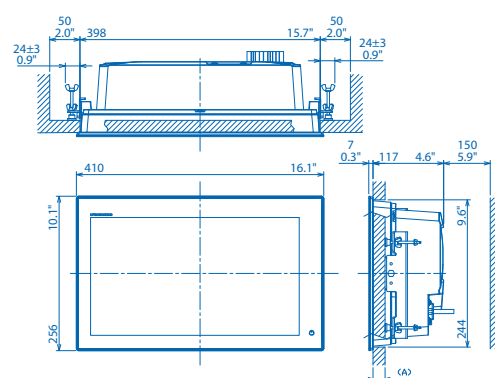
# Specifications - NavNet TZtouch 3 Continued

| NavNet TZtouch3 MFDs continued |  |  |   |             |
|--------------------------------|--|--|---|-------------|
| MODEL                          | TZT9F  | TZT12F   | TZT16F  | TZT19F      |
| <b>INTERFACE</b>               |  |  |   |             |
| CAN bus/NMEA2000               | 1 Port   |  |   |             |
| Input                          | 065280, 126992, 126993, 126996, 127237, 127245, 127251, 127257, 127488, 127489, 125505, 128259, 128267, 129025, 129026, 129029, 129330, 129038, 129039, 129040, 129041, 129291, 129538, 129540, 129793, 129794, 129798, 129801, 129802, 129808, 129809, 129810, 130306, 130310, 130311, 130312, 130313, 130314, 130316, 130577, 130578, 130817, 130818, 130820, 130822, 130823, 130826, 130827, 130828, 130880 |  |   |             |
| Output                         | 126992, 126993, 126996, 127250, 127251, 127257, 127258, 128259, 128267, 128275, 129025, 129026, 129029, 129033, 129283, 129284, 129285, 130306, 130310, 130311, 130312, 130313, 130314, 130316   |  |   |             |
| NMEA0183                       | 1 Serial Output Port   |  |   |             |
| Output                         | AAM, APB, BOD, DBT, DPT, GGA, GLL, GNS, GSA, GSV, RMB, RMC, RTE, TTM, VDM, VTG, WPL, XTE, ZDA  |  |   |             |
| LAN                            | 1 Port (100 BASE-TX)   |  | 2 Ports (100 BASE-TX)   |             |
| USB                            | 1 Port (USB 2.0) for control unit  | 1 Port (USB 2.0) for touch monitor and control unit:             | 1 Port (USB 2.0) for touch monitor and control unit: 1 Port USB output  |             |
| Video I/O                      | --   | Input: 2 Ports (NTSC/PAL)<br>Output: 1 Port (HDMI 720p)          | Input: 2 ports (NTSC/PAL) and 1 port HDMI 1920 x 1080p or less (progressive only)<br>Output: 1 port(HDMI 1080p) |             |
| AUX I/O                        | 2 Ports (Event Switch and External Power Switch) and 1 Port Buzzer Output  |  |   |             |
| SD Card Slot                   | 1 Micro SD Card Slot (Micro SDXC, rear)  |  |   |             |
| Wireless LAN                   | IEEE802.11b/g/n, Transmit frequency: 2.412 to 2,462 GHz, 11dBm max   |  |   |             |
| Transducer                     | 1 Port x MJ10 pin  | 1 Port x MJ12 pin for transducers, 1 Port x MJ7 pin for DI-FFAMP |   |             |
| <b>ENVIRONMENT</b>             |  |  |   |             |
| Temperature (IEC60945)         | -15°C to +55°C   |  |   |             |
| Relative Humidity              | 93% or less at +40° C  |  |   |             |
| Waterproofing                  | IP56   |  |   |             |
| <b>POWER</b>                   |  |  |   |             |
|                                | 12-24 VDC  |  |   |             |
|                                | 2.6 - 1.3 A  | 2.3 - 1.2 A  | 4.3 - 2.2 A   | 4.7 - 2.3 A |
| Rectifier (option)             | 100/110/115/220/230 VAC, 1 phase, 50/60Hz  |  |   |             |

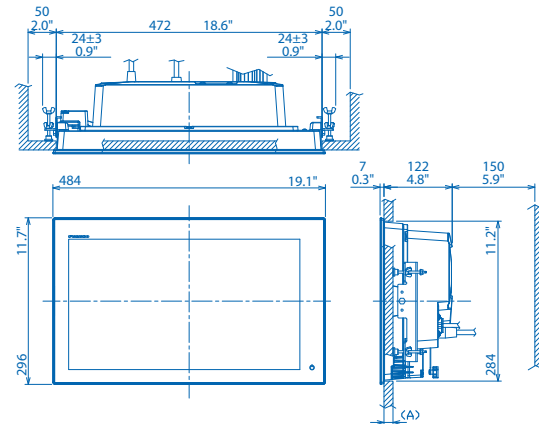
Multi Function Display (Tabletop Mount)\*  
TZT16F 6.7 kg 14.7 lb



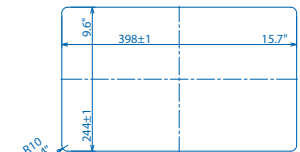
Multi Function Display (Flush Mount)  
TZT16F 5.9 kg 13.0 lb



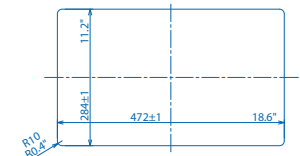
Multi Function Display (Flush Mount)  
TZT19F 7.8 kg 17.2 lb



Multi Function Display Flush Mount  
TZT16F Cutout Dimension



Multi Function Display Flush Mount  
TZT19F Cutout Dimension

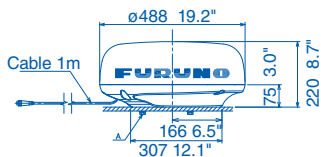


\*Bracket is optional

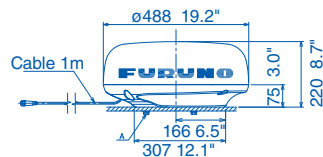
# Specifications - NavNet Series Radar

| MODEL                  |            | NavNet SERIES RADAR SENSOR   |   |  |  |  |   |
|------------------------|------------|--|---|--|--|--|---|
|                        |            | DRS4DL+  | DRS2D-NXT   | DRS4D-NXT  | DRS6A-NXT  | DRS12A-NXT   | DRS25A-NXT  |
| <b>ANTENNA</b>         |            |  |   |  |  |  |   |
| Type                   |            | ø480 mm Radome (19")   | ø488 mm Radome (19")  | ø610 mm Radome (24")   | ø1036 mm Open (3.5')<br>1255 mm Open (4')<br>1795 mm Open (6')             | ø1036 mm Open (3.5')<br>1255 mm Open (4')<br>1795 mm Open (6') | ø1036 mm Open (3.5')<br>1255 mm Open (4')<br>1795 mm Open (6')      |
| Beam Width             | Horizontal | 5.2°   | 5.2° typical (-3 dB) Adjustable between 2.6° and 5.2° (effective with RezBoost™ control)                          | 3.9° typical (-3 dB) Adjustable between 2° and 3.9° (effective with RezBoost™ control) | 2.3°/1.9°/1.35° (effective with RezBoost™ control)                         | 2.3°/1.9°/1.35° (effective with RezBoost™ control)             | 2.3°/1.9°/1.35° (effective with RezBoost™ control)                  |
|                        | Vertical   | 25°  | 25°   |  | 22°/22°/22°  | 22°/22°/22°  | 22°/22°/22°   |
| Antenna Rotation Speed |            | 24 rpm   | 24*/36/48 rpm range coupled or 24 rpm fixed<br>* In dual range mode, speed is limited to 24 rpm                   |  |  |  |   |
| <b>RF TRANSCEIVER</b>  |            |  |   |  |  |  |   |
| Frequency              |            | 9410 ± 30 MHz  | CH1: 9380 MHz (P0N), 9400 MHz (Q0N)<br>CH2: 9400 MHz (P0N), 9420 MHz (Q0N)<br>CH3: 9420 MHz (P0N), 9440 MHz (Q0N) |  |  |  |   |
| Pulse length & PRR     |            | S: 0.08 µs/360 Hz (0.0625 to 0.5 NM)<br>M: 0.3 µs/360 Hz (0.75 to 2 NM)<br>L: 0.8 µs/360 Hz (3 to 36 NM) | P0N: 0.08 µs to 1.2 µs/1100 Hz<br>Q0N: 5 µs to 18 µs/1100 Hz  |  | P0N: 0.04µs to 1.2µs/ 700Hz to 2000Hz<br>Q0N: 5µs to 48µs/ 700Hz to 2000Hz |  |   |
| Peak Output Power      |            | 4 kW   | Solid-State, 25 W   |  |  | Solid-State, 100 W   | Solid-State, 200 W  |
| Range Scales           |            | 0.0625 to 36* NM   | 0.0625 to 48* NM<br>* In dual range mode, range is limited to 12 NM   |  | 0.0625 to 72* NM<br>* In dual range mode, range is limited to 12 NM        |  | 0.0625 to 96* NM<br>* In dual range mode, range is limited to 12 NM |
| Bearing Accuracy       |            | ±1°  |   |  |  |  |   |
| <b>INTERFACE</b>       |            |  |   |  |  |  |   |
| Ports                  |            | LAN: 1 port, Ethernet, 100Base-TX RJ45   |   |  |  |  |   |
| <b>ENVIRONMENT</b>     |            |  |   |  |  |  |   |
|                        |            | Temperature: -25°C to +55°C,<br>Waterproofing: IPX6  | Temperature: -25°C to +55°C,<br>Waterproofing: IP26   |  | Temperature: -25°C to +55°C, Waterproofing: IP56                           |  |   |
| <b>POWER SUPPLY</b>    |            |  |   |  |  |  |   |
|                        |            | 12-24 VDC, 2.1-1.0 A   | 12-24 VDC, 2.5-1.3 A  |  | 12/24 VDC, 9.5/5.0 A   | 24 VDC, 5.0 A  | 24 VDC, 5.6 A   |

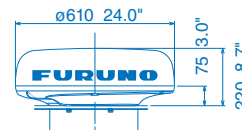
19" Radome Radar Sensor DRS4DL+ 5.7kg 12.6 lb



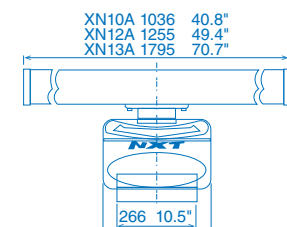
19" Radome Radar Sensor DRS2D-NXT 6.5 kg 14.3 lb



24" Radome Radar Sensor DRS4D-NXT 7.3kg 16.1 lb



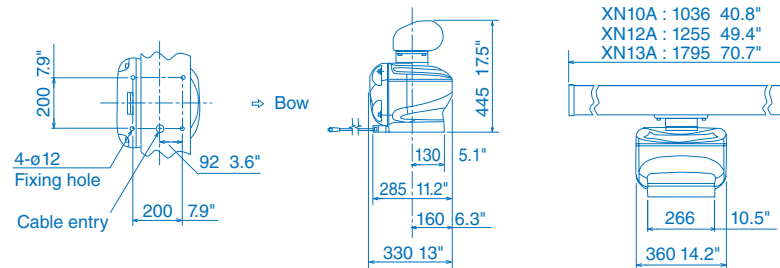
3.5 ft Open Array NXT Radar 22kg 48.5 lb  
4 ft Open Array NXT Radar 25kg 55.1 lb  
6 ft Open Array NXT Radar 27kg 59.5 lb



# Specifications - NavNet Series Radar Continued

| NavNet SERIES RADAR SENSOR continued   |                |   |
|--|----------------|---|
| DRS6A X-Class  | DRS12A X-Class | DRS25A X-Class                          |
| ø1036 mm Open (3.5')<br>1255 mm Open (4')<br>1795 mm Open (6')   |                | ø1255 mm Open (4')<br>1795 mm Open (6') |
| 2.3°/1.9°/1.35°  |                | 1.9°/1.35°                              |
| 22°/22°/22°  |                |   |
| 24/36/48 rpm range coupled or 24 rpm fixed   |                |   |
| 9410 ±30 MHz   |                |   |
| 0.08 µs/3000 Hz (0.0625 to 0.75 NM)<br>0.15 µs/3000 Hz (1 to 1.5 NM)<br>0.3 µs/1500 Hz (2 NM)<br>0.5 µs/1000 Hz (3 to 4 NM)<br>0.8 µs/600 Hz (6 to 9 NM)<br>1.2 µs/600 Hz (12 to 64 NM)<br>1.2 µs/550 Hz (72 to 96 NM) |                |   |
| 6kW  | 12kW           | 25kW                                    |
| 0.0625 to 96 NM  |                |   |
| ±1°  |                |   |
| LAN: 1 port, Ethernet, 100Base-TX RJ45   |                |   |
| Temperature: -25°C to +55°C, Waterproofing: IP56   |                |   |
| 24 VDC, 4.0 A  | 24 VDC, 4.5 A  | 24 VDC, 5.6 A                           |

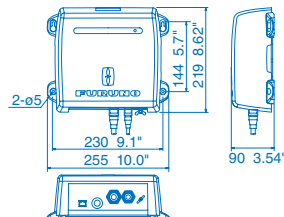
|  |         |         |
|--|---------|---------|
| 3.5 ft Open Radar Sensor DRS6A X-Class | 20.0 kg | 44.1 lb |
| 4 ft Open Radar Sensor DRS6A X-Class   | 21.0 kg | 46.3 lb |
| 6 ft Open Radar Sensor DRS6A X-Class   | 23.0 kg | 50.7 lb |
| 4 ft Open Radar Sensor DRS12A X-Class  | 21.0 kg | 46.3 lb |
| 6 ft Open Radar Sensor DRS12A X-Class  | 23.0 kg | 50.7 lb |
| 4 ft Open Radar Sensor DRS25A X-Class  | 22.0 kg | 48.5 lb |
| 6 ft Open Radar Sensor DRS25A X-Class  | 24.0 kg | 53.0 lb |



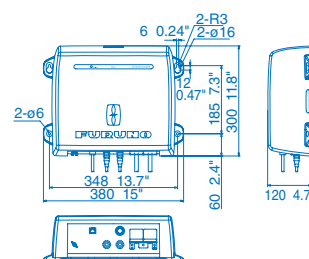
# Specifications - NavNet Series Fish Finders

| MODEL   | NETWORK FISH FINDERS  |   |  |   |
|---|---|---|--|---|
|   | DFF1-UHD  | BBDS1   | DFF3   | DI-FFAMP  |
| <b>TRANSCIVER &amp; DISPLAY</b>   |   |   |  |   |
| Display Modes   | Single (High or Low frequency), Dual (Both High and Low frequencies), Bottom-lock, Bottom-Zoom, ACCU-FISH™, Bottom Discrimination, Marker Zoom, A-Scope   | Single (50 or 200 kHz), Dual (50 and 200 kHz), Bottom-lock, Bottom-Zoom, ACCU-FISH™, Bottom Discrimination, Marker Zoom, A-scope  | Single (high or low), Dual (high and low), Bottom-lock, Bottom-Zoom, ACCU-FISH™*, Marker Zoom, A-scope * with CA50/200-1T only   | Single (High or Low frequency), Dual (Both High and Low frequencies), Bottom-lock, Bottom-Zoom, A-Scope |
| Frequency   | Dual frequency 30-70 & 175-225 kHz  | Dual frequency 50 and 200kHz  | The synthesized transducer works with dual frequencies between 28 and 200 kHz  | 26.6 to 242 kHz   |
| Broadband (CHIRP)   | Available   | N/A   | N/A  | Available 2 ch  |
| Range Scale   | Max. 1,200m   | Max. 1,200m   | Max. 3,000m  | Max. 3,000m   |
| Output Power  | 1kW   | 1kW   | 3kW  | 2kW/3kW/5kW/10kW*   |
| <b>ENVIRONMENT</b>  |   |   |  |   |
| Temperature   | N/A   |   | -15°C to +55°C   |   |
| Waterproofing   | IP55  | IP20  | IP20   | IP22  |
| <b>POWER SUPPLY</b>   |   |   |  |   |
|   |   | 12-24 VDC   |  | 12-24 VDC   |
|   | 30 W, 2.8-1.4 A   | 12 W, 1.1-0.4 A   | 30 W, 3.5 A  | 43.1 W, 3.2-1.9 A   |
| <b>TRANSDUCERS (Specify when ordering)</b>  |   |   |  |   |
| <p><b>1 kW</b><br/>Broadband transducers by AIRMAR®<br/>42-65 kHz (low), 130-210 kHz (high)<br/>CM265LH, B265LH (with temperature sensor)<br/>CM275LHW, B275LHW</p> | <p><b>600 W</b><br/>50/200 kHz:<br/>520-5PSD (Plastic, thru-hull), 520-5MSD (Bronze, thru-hull),<br/>525-5PWD (Plastic, transom),<br/>525STID-MSD (Bronze, thru-hull with speed/temp sensor),<br/>525STID-PWD (Plastic, transom with speed/temp sensor)<br/><b>1 kW</b><br/>(Optional Matching Box, MB1100 may be required)<br/>50/200 kHz: 50/200-1T, 50/200-12M</p> | <p><b>1/2/3 kW</b><br/>28 kHz:<br/>38 kHz:<br/>50 kHz:<br/>68 kHz:<br/>82 kHz:<br/>88 kHz:<br/>107 kHz:<br/>150 kHz:<br/>200 kHz:<br/>50/200 kHz:</p> <p>28F-8, 28BL-6HR, 28BL-12HR<br/>38BL-9HR, 38BL-15HR<br/>50B-6/6B, 50B-9B, 50BL-12HR, 50BL-24HR<br/>68F-8H, 68F-30H<br/>82B-35R<br/>88B-8, 88B-10, 88F-126H<br/>100B-10R<br/>150B-12H<br/>200B-5S, 200B-8/8B, 200B-12H<br/>50/200-1T</p> | <p><b>2 kW Dual-Band CHIRP</b><br/>PM111LH, PM111LHW, PM111LM, PM411LWM, R109LH, R109LHW, R109LM, R111LH, R111LM, R409LWM<br/><b>2/3 kW Dual-Band CHIRP</b><br/>CM599LH, CM599LHW, CM599LM, R509LH, R509LHW, R509LM, R599LH, R599LM<br/><b>2 kW Single-Band CW</b><br/>28BL-6HR, 38BL-9HR, 50BL-12HR, 82B-35R, 88B-10, 200B-8/8B<br/><b>3 kW Single-Band CW</b><br/>28BL-12HR, 38BL-15HR, 50BL-24HR, 68F-30H, 100B-10R, 150B-12H<br/><b>5 kW Single-Band CW*</b><br/>28F-38M**, 50F-38**, 88F-126H, 200B-12H<br/><b>10 kW Single-Band CW*</b><br/>28F-72**, 50F-70**</p> <p>*Rated power of these transducer is 5/10 kW, but actual output power from DI-FFAMP is 3 kW. Not compatible with TZT9F.<br/>**Booster Box BT-5 is needed for these transducers.</p> |   |

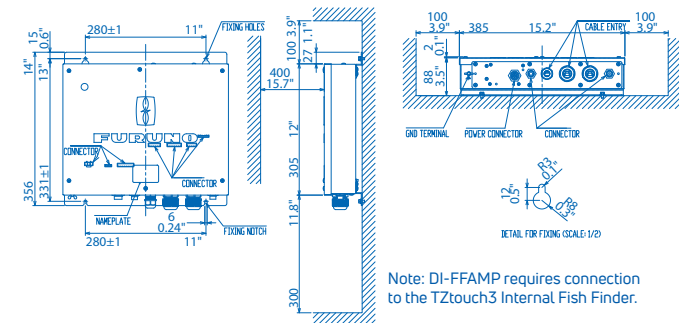
Network Fish Finder/Bottom Discrimination Sounder BBDS1 1.3 kg 2.9 lb



Network Fish Finder DFF3 3.8 kg 8.4 lb



Network Sounder Power Amplifier DI-FFAMP 6.3 kg 13.9 lb

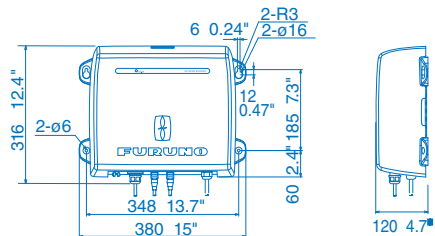


Note: DI-FFAMP requires connection to the TZtouch3 Internal Fish Finder.

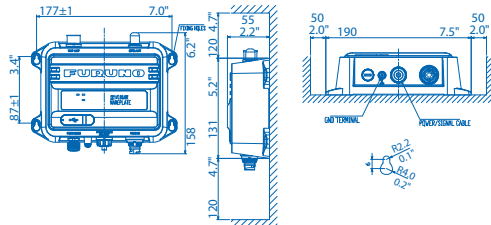
# Specifications - NavNet Series Multi Beam Sonar | AIS Receiver & Transponder

| MODEL                           | NETWORK MULTI BEAM SONAR   |
|---------------------------------|--|
|                                 | DFF-3D   |
| <b>TRANSCIVER &amp; DISPLAY</b> |  |
| Display Mode                    | Cross Section, Triple/Single Beam Sounder, Side Scan, 3D Sounder History, PBG (Personal Bathymetric Generator)   |
| Frequency                       | 165 kHz  |
| Beam Angle                      | 60° Port/Stbd, 120° total  |
| Detection Range                 | 200 m* (Side beam best performance)<br>300 m* (Main beam directly under boat)<br>* Depending on bottom type and water conditions.  |
| Range Scale                     | 5-1,200m   |
| <b>INTERFACE</b>                |  |
| LAN                             | 1 port, Ethernet 10/100Base-TX   |
| External KP                     | 1 port (optional external KP kit required)   |
| <b>ENVIRONMENT</b>              |  |
| Temperature                     | -15°C to +55°C   |
| Waterproofing                   | IP55   |
| <b>POWER SUPPLY</b>             |  |
|                                 | 12-24 VDC, 1.4-0.7 A   |
| <b>TRANSDUCER</b>               |  |
|                                 | 165T-B54 or 165T-SS54 (thru-hull mount), or 165T-TM54 (transom mount)<br>Combo Transducers: 165T-50/200-SS260 (thru-hull mount), 165T-265LH-PM488 (pocket mount), or 165T-50/200-TM260 (transom mount) |

Network Multi Beam Sonar DFF-3D 3.0 kg 6.6 lb



FA-40/70 AIS Receiver 1.5 kg 3.3 lb



| MODEL   | AIS RECEIVER   | CLASS-B+ AIS TRANSPONDER  |
|---|--|---|
|   | FA-40  | FA-70   |
| <b>STANDARDS</b>                              |  |   |
|   | IEC 60945 Ed.4<br>IMO MSC.140 (76)<br>ITU-R M.1371-5, EN 303 413 V1.11<br>EN 301 843-1 V2.2.1<br>IEC 60945 Ed.4+CORR.1, IEC 62368-1 Ed.3 | IMO MSC.140 (76)<br>ITU-R M.1371-5, DSC: ITU-R M.825-3<br>IEC 62287-1 Ed.3.0, IEC 62287-2 Ed.2.0, EN 303 413 V1.11<br>EN 301 843-1 V2.2.1<br>IEC 60945 Ed.4+CORR.1, IEC 62368-1 Ed.3, IEC 62311 Ed.1+Ed.2   |
| <b>TRANSPONDER UNIT* *FA40: RECEIVER UNIT</b> |  |   |
| TX/RX Frequency (FA40: RX Frequency)          | 156.025 to 162.025 MHz   |   |
| Output Power                                  | ----   | 5W or 1W(SOTDMA), 2W(CSTDMA)  |
| Channel Spacing                               | 25 kHz   | 25 kHz  |
| <b>GPS RECEIVER</b>                           |  |   |
| Receiving Channels                            | ----   | 12 channels, SBAS 2 channels, 14 satellites tracking  |
| Rx Frequency                                  | ----   | 1575.42 MHz   |
| Rx Code                                       | ----   | C/A code  |
| Position Accuracy                             | ----   | 13 m ( 2 drms, HDOP <= 4)   |
| <b>INTERFACE</b>                              |  |   |
| NMEA0183                                      | Input  | ACA, ACK, AIQ, DTM, GBS, GGA, GLL, GNS, HDT, OSD, RMC, SSD, THS, VBW, VSD, VTG  |
|   | Output   | ABK, ACA, ACS, ALR, GGA, GLL, RMC, SSD, TXT, VDM, VDO, VER, VSD, VTG  |
| NMEA2000                                      | Input  | 059392, 059904, 060160, 060416, 060928, 065240, 126208, 127250  |
|   | Output   | 059392, 059904, 060928, 126208, 126464, 126992, 126993, 126996, 126998, 127258, 129025, 129026, 129029, 129038, 129039, 129040, 129041, 129540, 129792, 129793, 129794, 129795, 129796, 129797, 129798, 129800, 129801, 129802, 129803, 129804, 129805, 129806, 129807, 129809, 129810, 129811, 129812, 129813                        |
|   |  | ABM, ACK, AIQ, BBM, HDT, SSD, THS, VSD (ABM, BBM: SOTDMA only)  |
|   |  | ABK, ACA, ACS, ALR, GGA, GLL, RMC, SSD, TXT, VDM, VDO, VER, VSD, VTG  |
|   |  | 059392, 059904, 060160, 060416, 060928, 065240, 126208, 127250  |
|   |  | 059392, 059904, 060928, 126208, 126464, 126992, 126993, 126996, 126998, 127258, 129025, 129026, 129029, 129038, 129039, 129040, 129041, 129540, 129792, 129793, 129794, 129795, 129796, 129797, 129798, 129800, 129801, 129802, 129803, 129804*, 129805, 129806, 129807, 129809, 129810, 129811, 129812*, 129813* (*SOTDMA mode only) |
| <b>ENVIRONMENT</b>                            |  |   |
| Temperature                                   | Antenna Unit   | -25°C to +70°C  |
|   | Other Units  | -15°C to +55°C  |
| Waterproofing                                 | Antenna Unit   | IP56  |
|   | Other Units  | IP55  |
| <b>POWER SUPPLY</b>                           |  |   |
| Transponder Unit (FA40: Receiver Unit)        | 12-24 VDC, 0.3-0.2 A   | 12-24 VDC, 1.8-0.9 A  |
| Display Unit:                                 | ----   | ----  |



[www.furuno.com](http://www.furuno.com)  
[www.navnet.com](http://www.navnet.com)

**BEWARE OF SIMILAR PRODUCTS**

All brand and product names are trademarks, or service marks of their respective holders.

**FURUNO ELECTRIC CO., LTD.**  
Japan [www.furuno.com](http://www.furuno.com)

**FURUNO U.S.A., INC.**  
U.S.A. [www.furunousa.com](http://www.furunousa.com)

**FURUNO PANAMA S.A.**  
Republic of Panama [www.furuno.com.pa](http://www.furuno.com.pa)

**FURUNO (UK) LIMITED**  
U.K. [www.furuno.co.uk](http://www.furuno.co.uk)

**FURUNO NORGE A/S**  
Norway [www.furuno.no](http://www.furuno.no)

**FURUNO DANMARK A/S**  
Denmark [www.furuno.dk](http://www.furuno.dk)

**FURUNO SVERIGE AB**  
Sweden [www.furuno.se](http://www.furuno.se)

**FURUNO FINLAND OY**  
Finland [www.furuno.fi](http://www.furuno.fi)

**FURUNO POLSKA Sp. Z o.o.**  
Poland [www.furuno.pl](http://www.furuno.pl)

**FURUNO DEUTSCHLAND GmbH**  
Germany [www.furuno.de](http://www.furuno.de)

**FURUNO FRANCE S.A.S.**  
France [www.furuno.fr](http://www.furuno.fr)

**FURUNO ESPAÑA S.A.**  
Spain [www.furuno.es](http://www.furuno.es)

**FURUNO ITALIA S.R.L.**  
Italy [www.furuno.it](http://www.furuno.it)

**FURUNO HELLAS S.A.**  
Greece [www.furuno.gr](http://www.furuno.gr)

**FURUNO (CYPRUS) LTD**  
Cyprus [www.furuno.com.cy](http://www.furuno.com.cy)

**FURUNO SHANGHAI CO., LTD.**  
China [www.furuno.com/cn](http://www.furuno.com/cn)

**FURUNO CHINA CO., LTD.**  
Hong Kong [www.furuno.com/cn](http://www.furuno.com/cn)

**FURUNO KOREA CO., LTD**  
Korea

**FURUNO SINGAPORE**  
Singapore [www.furuno.sg](http://www.furuno.sg)

**PT FURUNO ELECTRIC INDONESIA**  
Indonesia [www.furuno.id](http://www.furuno.id)

**FURUNO ELECTRIC (MALAYSIA) SDN. BHD.**  
Malaysia [www.furuno.com/my](http://www.furuno.com/my)

SPECIFICATIONS SUBJECT TO CHANGE WITHOUT NOTICE

Catalog No. CA000001641  
B-2209LB  
Printed in Japan